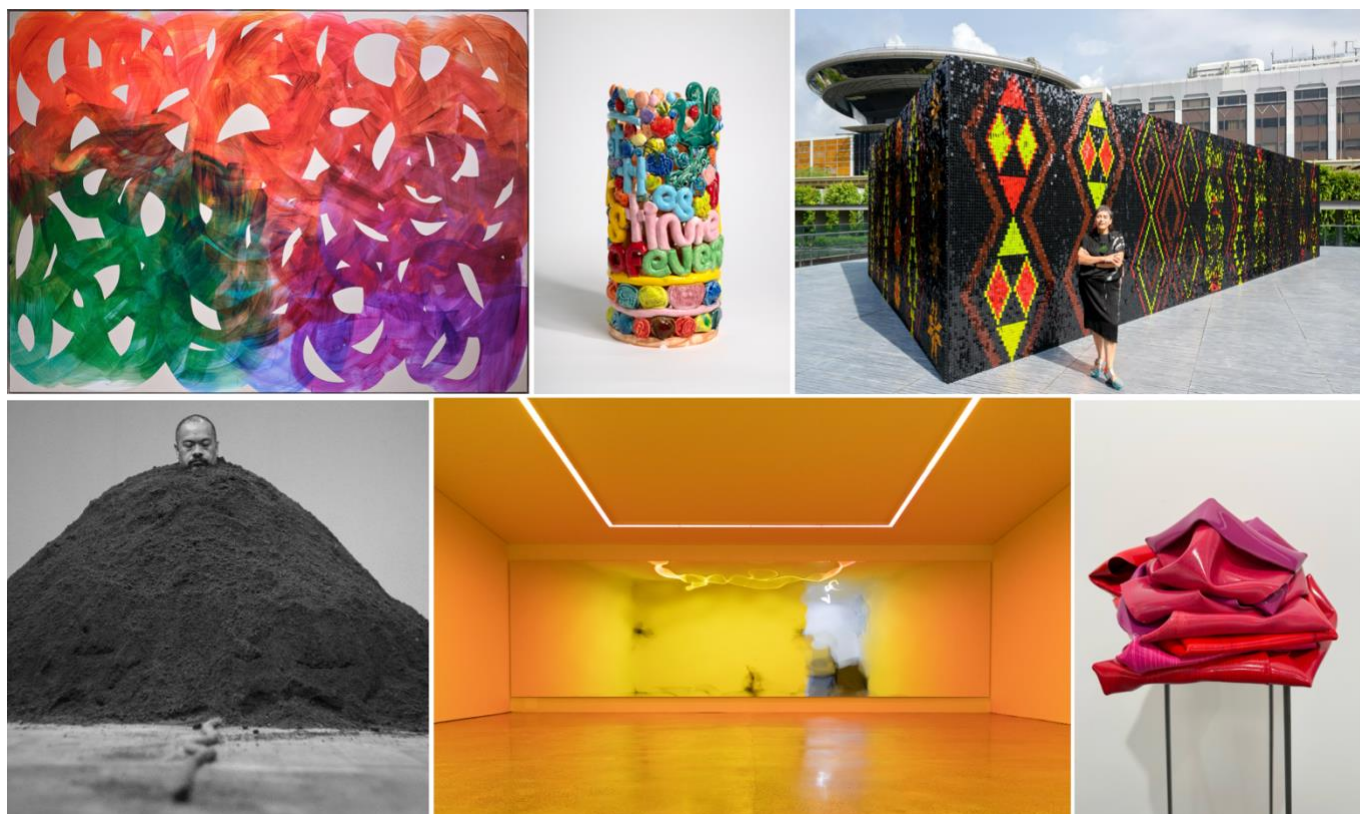


Sydney Contemporary announces lineup for curated programs alongside exhibitor presentation highlights

- A special performance by Dr Christian Thompson AO, nine ambitious large-scale installations, including a major new site-specific work by Lisa Reihana, a hands-on making space for kids and dynamic talks with industry leaders -



Sydney, Australia: **Sydney Contemporary**, in partnership with **Principal Partner MA Financial Group**, today announced the lineup for its curated programs, **Installation**, **Performance**, **Kid Contemporary** and **Talks**, alongside exhibitor presentation highlights. Presented from **11 - 14 September 2025** at **Carriageworks** the longstanding Presenting Partner of the fair, the ninth edition is the largest to date, featuring **114 exhibitors**, more than **500 artists**, and the debut of new sector **Photo Sydney**.

INSTALLATION AND PERFORMANCE CONTEMPORARY

Curated by Director of UNSW Galleries **José da Silva**, the 2025 program for **Installation** and **Performance Contemporary** showcases works that extend beyond the traditional booth presentation, providing an opportunity to experience innovative, site-specific, and interactive installations and live performance within the unique architecture and atmosphere of Carriageworks.

From the spectacular to the intimate, the program features a special performance by **Dr Christian Thompson AO**, and nine showstopping installations by artists from Australian and Aotearoa New Zealand that expand the fields of painting and sculpture, activate sound, performance, and kinetic form, and respond to everyday materials and vernacular design.

Artists and artworks include:

- **Dr Christian Thompson AO** will give two live performances of his work *Recital* on the opening night, Art Night, of the Fair on Thursday 11 September. Building on 25 years of engagement with recorded sound and the revival of his family's endangered Bidjara language, Thompson enacts a powerful reclamation through vocalization. His performances offer an immersive experience, transforming contemporary art spaces into living sites for the resurgence of language. Presented by **Michael Reid, Sydney + Berlin**.
- Award-winning Aotearoa New Zealand artist **Lisa Reihana CNZM** presents a new site-specific kinetic sculpture created specifically for Sydney Contemporary 2025, located on the exterior of the Carriageworks building. The work references a waharoa—the traditional Māori gateway in front of a marae—and a pare, or door lintel, that serves as a boundary marker, separating the outside world from the sacred space within. Thousands of shimmering discs designed to reflect sunlight animate the building's entrance, transforming it into a living tapestry that responds to wind and light, creating an architectural blessing for all who pass under as they embark on their journey inside Sydney Contemporary. Presented by **Gallery Sally Dan-Cuthbert**.
- **Kalisolaite 'Uhila** presents *Kelekele Mo'ui (Living Soil)*, a day-long endurance performance that sees the artist sitting still while buried up to his neck in a pile of soil within the Fair on Saturday 13 September. Exploring the relationship between land, labour, and life, the work contrasts moments of intense physical exertion with the stillness of maumau-taimi—a concept translated as “wasting time”—to question the value systems shaping our understanding of productivity, gender, and the body. Presented by **Michael Lett Gallery** with support by **UNSW Galleries**.
- **Jonny Niesche** presents a major new work that builds on recent collaborations with Mark Pritchard, using low-frequency sound and vibration to subtly activate the body and space, creating a synesthetic encounter with Niesche's paintings. Drawing on the atmospheric qualities of colour field painting, psychedelia, and spiritual abstraction, these works invite a contemplative, almost meditative engagement with the sensorial present. Presented by **1301SW|STARKWHITE**.
- **Zac Langdon-Pole** presents *Memory Garden*, a suite of five 1:1 marble replica of iconic sculptures from antiquity and modernity, from Michelangelo's *David* (1504) to Rodin's *The Kiss* (1882), reproduced with their human figures removed. What remains—the rocks, foliage, and stumps—are elevated from supporting detail to central subject, inviting quiet contemplation of absence, presence, and the ghostly persistence of collective memory. Presented by **STATION**.
- Aboriginal artist collective **Tennant Creek Brio** presents *UAP: Unidentified (Ab)original Phenomenon*, a sculpture that takes the form of an Australian gothic guardian angel or “petrochemical effigy”. The work exemplifies Tennant Creek Brio's method of collage, assemblage, and creative creolisation with found objects and materials. Presented by **CASSANDRA BIRD**.
- **Helen Calder** presents *Stacked*, continuing her practice of folding and layering paint skins atop everyday objects such as stools, playfully investigating ideas of balance, compression, and the performative relationship between structure and support. Calder builds chromatic complexity through multiple translucent layers, inviting viewers to consider painting as a pliable, dynamic form that resists containment. Presented by **Two Rooms**.
- **Augusta Vinall Richardson** presents an ambitious new sculptural work crafted from stainless steel that navigates repetition and variation, verticality, and unpredictability. Each modular element has its own

distinctive form yet comes together—like pieces of a puzzle—into a larger, three-tiered composition. Presented by **The Commercial**.

- **Marley Dawson** reimagines the iconic Emeco 1006 chair as sculptural architecture, arranging sixteen cast-aluminium replicas in a circular formation. Engineered initially for the United States Navy from recycled aluminium, the 1006 was built for institutional durability, serving in warships and prisons. Dawson's chairs form a meditative space that reframes the object's industrial and political history, reflecting on material legacy, systems of control, and the mutable meanings design acquires over time. Presented by **Roslyn Oxley9 Gallery**.
- **Gemma Smith** presents two works from her *Shadow Paintings* series. These large-scale immersive canvases employ translucent layers of matte and gloss acrylic, creating subtle topographies that allow new compositions to be discovered through shifts with light and movement. Presented by **Sullivan + Strumpf**.
- **Gerwyn Davies** presents a significant new work for the Sydney Contemporary café, referencing the bold graphic language of butcher shop blackboard signage. Hand-crafted and visually playful, the banners explore vernacular aesthetics, cultural memory, and the performative possibilities of textiles. Presented by **Michael Reid, Sydney + Berlin**.

TALKS

A dynamic lineup of industry leaders come together for the Talks program, exploring current trends and topics at the intersection of art, design and architecture. Highlights include a popular panel on *How to Collect Art* facilitated by art advisor and author of *Collecting: Living with Art* **Kym Elphinstone** featuring insights from three collectors at different stages of their collecting journey, and two intimate talks as part of a collaboration with **Arts-Matter**, presenting candid conversations between artist duos who feature in a new publication released in September *Artist by Artist*. To celebrate the launch of the new Photo Sydney sector, a dedicated talk with photographers including **Lisa Sorgini, George Byrne, wani toaishara** and **Leila Jefferys**, moderated by **Amber Creswell Bell**, will take place on Thursday 11 September.

Two 'ask us anything' style panels, one focused on public art curated by internationally acclaimed **UAP (Urban Art Projects)**, and a second with leading gallerists **Tim Olsen** and **Andy Dinan** to allow young artists to get expert advice about breaking into the art world.

A series of discussions curated by **Micheal Do**, Curator of Contemporary Art at the Sydney Opera House and **Stephen Todd**, Design Editor of Australian Financial Review, will include:

- **From the Love Seat: Reflections | 11 September, 6.30pm**
This panel, moderated by journalist **Benjamin Law**, gathers art world couples who live, love, and make art together - sharing studios, calendars, secrets, and (yes) the occasional email account. Speakers take a seat on the proverbial love couch to reflect on how art-making (and art-working) can become a language of care, conflict, and collaboration. Speakers include artists **Amrita Hepi** and **Abdul Abdullah**, and **Mariam Arcilla** and **Mason Kimber**.
- **When Art Meets Commerce: The Power of Cross-Industry Collaboration | 12 September, 11.30am**
Four industry-leaders discuss strategies for forging and nurturing meaningful relationships between artists & designers, architects & decorators with art consultants, curators, galleries and collectors - and how these deep relationships benefit the sector as a whole. Moderated by **Stephen Todd**, leading Sydney art dealer **Joanna Stumpf** is joined by a prominent Auckland-based design and art space director **Zoe Black** and

visionary artist **Jonny Niesche** whose commissioned collaboration with Gucci has been emblazoned across SoHo, New York.

- **Designing Spaces for an Artful Life | 12 September, 1.30pm**

Hotels, galleries and offices can optimise the emotional impact of art and design to create highly desirable environments beyond the home. This session brings together **Charlotte Wilson**, the interior designer of Sydney's chicest new hotel The Eve; **William Smart**, designer of some of the best houses in Australia; Architect **Kerstin Thompson**, designer of some of NSW's major cultural destinations, and gallerist **Kitty Clark** of Saint Cloche, renowned for parlaying artists into chic hospitality and workplace settings. A prominent art consultant, **Mark Hughes** jumps into the fray, weighing in on how art can transform even the most commercial spaces.

- **My brat summer | 12 September, 3pm**

For the divas, the disruptors, and the chronically online. *My brat summer* assembles the art world's culturally omnivorous agents of change—those rewriting the rules with irony, intellect, and high-gloss bravado. Think pop star Charli XCX meets historian and critic Claire Bishop: they're unserious about seriousness, allergic to legacy, and fluent in critical theory. Moderated by artist **Jazz Money**, speakers include Assistant Curator at the Museum of Contemporary Art **Tim Riley Walsh**, First Nations curator **Coby Edgar**, Founder and Artistic Director of PHOTO Australia and PHOTO International Festival of Photography in Melbourne **Elias Redstone** and Director, Lewers: Penrith Regional Gallery **Toby Chapman**.

- **True Believers | 12 September, 5pm**

From those who still care, paying attention, asking what's next? *True Believers* brings together artists and organisers who've stayed in the art world – through its shifts, its challengers and its contradictions. Join them as they talk about belief, burnout, soft power, and what it takes to keep going with care and imagination. Speakers include artist, writer and curator **Glenn Barkley**, Artistic Director and CEO of ACCA, the Australian Centre for Contemporary Art **Myles Russel Cook**, artworld veteran **Richard Perram OAM** and artist and curator **Talia Smith**.

- **Design Made to Collect: The Art of the Object | 13 September, 12pm**

This panel is a deep dive into the increasingly lucrative field of collectible design and asks how both art and design together can enhance the experience of our interiors. Lineup includes: **Don Cameron**, a designer of exquisite furniture and lighting; **Jillian Dinkel**, an ex-American Vogue photo production whizz turned award-winning Sydney-based interior designer; **Adam Goodrum**, an industrial designer whose limited-edition work fetches upward of \$200,000; and Brisbane gallerist **Danielle Renshaw**, who is refining that city's art focus ahead of the 2032 Olympics.

Talks is supported by **The Copyright Agency's Cultural Fund**.

KID CONTEMPORARY

Celebrated Australian artist **Glenn Barkley**, known for his bold and colourful ceramic works, presents *"Positive! Affirmation! Workshop!"*, a hands-on creative space for kids at the Fair. This playful, joy-fuelled installation invites young visitors into a world of self-expression, collage and colour. One wall is wallpapered in Barkley's signature artwork, while a series of interactive stations let kids cut out fun shapes from paper - pots, shells, faces, tokens - and turn them into wearable pieces including necklaces, badges and stickers, with punchy, motivational slogans like "You're the greatest!" and "There are no losers in contemporary art!"

Glenn Barkley is represented by **Sullivan+Strumpf**. Materials are supported by **Standish & Co.**, and Kid Contemporary is supported by **The Copyright Agency's Cultural Fund**.

BOOTH HIGHLIGHTS

Across the four sectors, Galleries, Future, Works on Paper and Photo Sydney, highlight presentations include:

- Michael Lett** presents a solo exhibition by **Mike Hewson**, with a new series of unique sculptures sold in a grocery store model priced by weight and packaged with the ease of a cash and carry style transaction in a custom designed-for-life tote bag that buyers can take home. Titled *GeoPets*, these sculptures reconfigure vitrified construction bricks with crystals, rare gems and homewares.
- Neon Parc** presents a bold group exhibition, featuring **Colleen Ahern, Hugo Blomley, Dale Frank, Maria Kozic**, and **Rob McLeish**. Exploring themes of desire, glamour, death, and decay, the presentation underscores the gallery's commitment to artists who challenge conventions. Highlights include **Maria Kozic's** iconic *T.I.T.S* (1991); new sculptures by **Hugo Blomley**; **Dale Frank's** reflective work *Beach 30s* (2015); **Rob McLeish's** investigations into visual culture and entropy; and **Colleen Ahern's** new copper-plate paintings, merging pop and devotional imagery.
- Niagara Galleries** presents **Julia Ciccarone's** first solo exhibition in Sydney, unveiling a new series of paintings that explore our complex relationship with nature, memory, and responsibility. Winner of the 2024 Len Fox and 2021 Archibald ANZ People's Choice Awards, **Ciccarone** blends figurative and dreamlike imagery, often drawn from storyboards, personal objects, and lived experience. Her cinematic approach - shaped by collaborations with filmmaker Kasimir Burgess - imbues each work with narrative depth and emotional resonance.
- Ames Yavuz** presents a dynamic booth featuring new works by **Abdul Abdullah, Isabel and Alfredo Aquilizan, Billy Bain, Emily Floyd, Vincent Namatjira, Reko Rennie** and **Caroline Rothwell**, with an immersive solo installation by **Harriette Bryant**. The presentation explores themes of identity, history, and cultural memory through diverse practices—ranging from satirical posters and sculptural installations to feminist typography and bold iconography. **Harriette Bryant's** powerful installation transforms everyday domestic objects into vessels of personal and communal history, reclaiming narratives of displacement and resilience.
- Justin Miller Art** presents a selection of work, including a major painting by **Emily Kam Kngwarreye**, following her acclaimed retrospective at Tate Modern - offering a rare chance to experience the scale and power of her work. Also debuting is a previously unseen 1974 self-portrait by **Brett Whiteley**, an intimate and revealing piece from a pivotal moment in his career. The presentation reflects the gallery's ongoing commitment to showcasing seminal works by leading 20th and 21st century artists.
- OLSEN Gallery** presents two exhibitions, one in the main Galleries sector and another in Photo Sydney. In the main sector, a solo presentation of new paintings and sculpture by artist and designer **Louise Olsen** of Designer Designs is presented alongside a smaller room promoting blue chip secondary market works by **John Olsen, Fred Williams, Nicholas Harding, Emily Kam Kngwarreye** among others. In Photo Sydney, a solo exhibition of new works by US-based Australian photographer **George Byrne** from his *Synthetica* series, marks the first time this group of works will be exhibited together.
- Jonathan Smart Gallery | Emily Gardener Projects** presents an artist-led immersive installation by **Julia Morison**, featuring a full set of 78 illustrated tarot cards designed by the artist, with tarot readings offered to visitors onsite at the gallery booth. The work expands on Morison's investigation into ancient systems of knowledge, spiritual symbolism and the collective unconscious.

- **Paul Blackmore** presents his recent photographic series *The Distance Between*, a journey through the heart of Australia marked by hardship and beauty and softened by time. It is a portrait of resilience, found in quiet moments and vast landscapes alike. (Photo Sydney)
- **EG Projects** presents a powerful lineup of five powerhouse mid-career Indigenous women artists from Western Australia. Featuring works by female artists aged between 40 and 80, including **Amanda Bell**, **Doreen Chapman**, **May Chapman**, **Wendy Warry** and **Leah Umbagai**, the presentation includes painting on canvas, acrylic, bark and ochre works; offering a dynamic range of mediums grounded in cultural knowledge, personal narrative, identity and political consciousness.
- **Hugo Michell Gallery** presents four contemporary Australian painters who bring global experience to their medium. Paintings on stringy bark and Larrakitj by **Garawan Wanambi** sit opposite large-scale paintings by **Georgia Spain**, exploring painted mark making, text and abstraction. **Richard Lewer** paints verso onto unprimed canvas, fighting with the limits of the medium, and **William Mackinnon** grapples with belonging in large scale oil paintings merging his two homes; Australia and Spain.
- New exhibitor, Los Angeles based **La Loma** is pleased to present a dual exhibition of intimately scaled paintings by **Rebecca Partridge** and **Skylar Hughes**. Hughes' layered, textured works evoke meditative landscapes where nature and memory intersect, while Partridge's *Sky Paintings*, inspired by time spent in the Mojave Desert, explore ecology and atmosphere through a restrained palette and cinematic depth. Together, their works create a dialogue between materiality and meaning, tracing personal and collective memory through abstracted natural forms.
- **Redbase Art** presents Chinese artist **Shen Shaomin's** *Chinese Carp* installation of 2000 mechanical carps that illustrate the consequences of human desire and artificiality. These mechanical carps confront the duality of artificial creation and natural creatures, and act as a reminder of man's impact on nature. Visitors can purchase a canned carp from the installation.
- **The National Art School** returns to the fair to present the next wave of emerging artists at Sydney Contemporary. This dynamic group of nine recent NAS graduates showcases work across the school's six major disciplines: Painting, Sculpture, Printmaking, Ceramics, Photomedia, and Drawing. Featured artists include **Jake Bartley** and **Harrison Chao** (Painting), **Lewis Doherty** (Sculpture), **Isabella Kennedy** and **Taylor Steel** (Printmaking), **Christian Bonett** and **Megan McKenzie** (Ceramics), **Joanna Ng** (Photomedia), and **Rachel Mackay** (Drawing). Together, their diverse practices reflect the strength and breadth of contemporary artmaking at NAS.
- **Nasha Gallery** presents a solo exhibition of new paintings and small sculptures by **Mark Maurangi Carol**, reflecting on questions of scale, movement, and representation from a diasporic Pacific perspective. Titled *Islands not to scale (ueata) - Act III*, the exhibition takes inspiration from his mother's birthplace of the Cook Island, interrogating misrepresentations of Pacific geography and culture. (Future)
- Sydney-based photographer **Toby Burrows** new series of photographic works exploring rich landscapes, interrupted by the presence of ornate mirrors. Mirrors have always held an intrigue for the artist whilst presenting instances of conflicting interpretation. Whether for self-observation or as a metaphor, the mirrors in each scene seem to suggest a portal to elsewhere. (Photo Sydney)
- **16albermarle Project Space & Project Eleven** presents five young and mid-career Indonesian artists—**Agnes Christina**, **Dias Prabu**, **Kuncir Sathya Viku**, **Made Suarimbawa Dalbo**, and **Theresia Agustina Sitompul** - each offering unique perspectives shaped by diverse regions and cultural backgrounds across the archipelago. The presentation explores identity, history, and tradition through labor-intensive practices

including batik-inspired techniques, cyanotype, drawing, and sculptural works on paper. Anchored by returning artists Agnes Christina and Dias Prabu, and introducing three new voices, the booth continues the gallery's focus on cross-cultural dialogue, material experimentation, and connecting Australian audiences with Southeast Asian contemporary art. (Works on Paper)

Sydney Contemporary Fair Director Zoe Paulsen said: *"This year's Sydney Contemporary is bigger and bolder than ever. We're welcoming more exhibitors, more artists, and launching exciting new initiatives like Photo Sydney. Whether you're a seasoned collector or just curious about contemporary art, there's something here for everyone. It's a chance to experience boundary-pushing installations, live performance, and thought-provoking conversations, all under one roof at Carriageworks at Australasia's premier art fair. We can't wait to share it with you."*

Tickets to Sydney Contemporary are available to [purchase here](#).

Sydney Contemporary is supported proudly by the NSW Government through its tourism and major events agency, Destination NSW.

Ends

MEDIA CONTACTS: To request interviews, further information or imagery please contact:

Jasmine Hersee, jasmine@articulateadvisory.com, 0451 087 196

Siân Davies, sian@articulateadvisory.com, 0402 728 462

IMAGES: <https://drive.google.com/drive/folders/1wKEjRPOHpvpxgYeQNv3z2skfdYfM865?usp=sharing>

IMAGE CAPTIONS: Gemma Smith, *Triangulation* 2025, Acrylic on canvas, 380 x 280 cm. Photograph: Philip Hyunh, Sullivan + Strumpf, Gadigal Country / Sydney; Glenn Barkley, *timethattiresofeveryone open vessel*, 2024, Sullivan + Strumpf; Lisa Reihana, *GLISTEN*, 2024. Ng Teng Fong Roof Garden Commission, National Gallery Singapore, Gallery Sally Dan-Cuthbert, Gadigal Country / Sydney; Kalisolaite 'Uhila, *Kelekele Mo'ui (Living Soil)* 2024, Live performance, Commissioned by Te Whare Toi o Heretaunga Hastings Art Gallery, Courtesy of the artist and Michael Lett, Photograph by Robert George, Micheal Lett, Tāmaki Makaurau / Auckland; Jonny Niesche with Mark Pritchard, *Fat Lava* 2025, 1301 SW | STARKWHITE, Tāmaki Makaurau / Auckland; Helen Calder, *Red Stack* 2025, Acrylic paint and steel frame, 122 x 33 x 33 cm, Two Rooms, Tāmaki Makaurau Auckland

Sydney Contemporary Principal Partner



Strategic Sponsor



Venue Partner

CARRIAGEWORKS

Kid Contemporary and Talks are supported by The Copyright Agency's Cultural Fund



ABOUT SYDNEY CONTEMPORARY: Sydney Contemporary, Australasia's premier contemporary art fair, returns from 11 – 14 September 2025 with the country's largest and most diverse gathering of local and international galleries. Staged at Carriageworks, Australia's largest multi-arts centre, the Fair welcomes 114 exhibitors.

Defined by the vibrancy of its host city, Sydney Contemporary provides collectors, industry professionals and the art loving public access to cutting-edge art from some of the world's most respected artists and galleries as well as the opportunity to discover new, emerging talent.

Alongside the galleries are curated sectors for Installation and Performance as well as an ambitious program that includes engaging panel discussions, guided tours, educational workshops and an extensive VIP Program. The Fair is also home to restaurants, cafes and bespoke bars making it an all-encompassing art and dining experience. Billed as one of the most celebrated events on Australia's cultural calendar, Sydney Contemporary has firmly established itself as a must-attend art event and the perfect place to discover and collect modern and contemporary art.

Sydney Contemporary was founded in 2013 by Tim Etchells of SME London Ltd. Etchells also co-founded Art Central (Hong Kong), Taipei Dangdai, ART SG, and was co-founder of ART HK, now Art Basel Hong Kong.

<https://sydneycontemporary.com.au>

ABOUT MA FINANCIAL GROUP: MA Financial Group is a global alternative asset manager specialising in private credit, real estate and hospitality. We lend to property, corporate and specialty finance sectors and provide corporate advice.

Our investment teams have diverse skill sets and experience across a range of strategies and market conditions and are focused on delivering long-term growth. Our conviction runs deep and as testament to this we co-invest in many of our strategies alongside our clients, aligning our interests with theirs.

We invest and manage \$10.3 billion on behalf of our clients, are responsible for \$141 billion in managed loans and have advised on over \$125 billion in advisory and equity capital market transactions.

We have over 700 professionals across locations in Australia, China, Hong Kong, New Zealand, Singapore and the United States.

Website: <https://mafinancial.com/> | LinkedIn: [@MAFinancial Group](#) | Instagram: [@mafinancial](#)

ABOUT CARRIAGEWORKS: Carriageworks is one of Australia's most significant creative industry hubs, renowned for its dynamic cultural events, performances, and exhibitions. Housed in a historic railway workshop in Sydney on Gadigal Land, Carriageworks offers a vibrant platform for contemporary art, theatre, music, dance and the creative industries, collaborating with leading local and international artists to foster innovation and creativity in its distinctive industrial setting. carriageworks.com.au; Instagram [@Carriageworks](#); Facebook www.facebook.com/carriageworks; X [@Carriageworks](#).

FOR MORE INFORMATION VISIT:

Website: <https://sydneycontemporary.com.au/>

Instagram: <https://www.instagram.com/sydneycontemporary/>

Facebook: <https://www.facebook.com/SydneyContemporary/>

SYDNEY CONTEMPORARY 2025 GALLERY LIST (CURRENT AT 22 JULY 2025)

GALLERIES

The main sector of the Fair provides a significant platform for solo or group exhibitions by leading galleries.

| | |
|--|--|
| 1301SW STARKWHITE | Melbourne / Naarm, Sydney / Gadigal Country, Auckland / Tāmaki Makaurau, Queenstown / Tāhuna |
| 3:33 Art Projects | Sydney / Gadigal Country |
| Alcaston Gallery | Melbourne / Naarm |
| Ames Yavuz | Sydney / Gadigal Country, Singapore, London |
| APY Art Centre Collective | Adelaide / Kurna, Melbourne / Naarm, Sydney / Gadigal Country |
| ARC ONE Gallery | Melbourne / Naarm |
| Art Collective WA | Perth / Boorloo |
| Art Leven | Sydney / Gadigal Country |
| Brenda Colahan Fine Art | Sydney / Gadigal Country |
| Cassandra Bird | Sydney / Gadigal Country |
| CBD Gallery | Sydney / Gadigal Country |
| CHALK HORSE | Sydney / Gadigal Country |
| COMA | Sydney / Gadigal Country |
| Curatorial+Co. | Sydney / Gadigal Country |
| D'Lan Contemporary | Melbourne / Naarm, Sydney / Gadigal Country, New York |
| Darren Knight Gallery | Sydney / Gadigal Country |
| DOMINIK MERSCH GALLERY | Sydney / Gadigal Country |
| EDWINA CORLETTE | Brisbane / Meanjin |
| EG Projects | Perth / Boorloo |
| Egg & Dart | Wollongong / Dharawal |
| FHE Galleries | Auckland / Tāmaki Makaurau |
| Fine Arts, Sydney | Sydney / Gadigal Country |
| FLINDERS LANE GALLERY | Melbourne / Naarm |
| Flowers Gallery | Hong Kong |
| Gallery LNL | Sydney / Gadigal Country |
| Gallery Sally Dan-Cuthbert | Sydney / Gadigal Country |
| Galleriesmith | Melbourne / Naarm |
| Gow Langsford | Auckland / Tāmaki Makaurau |
| Hugo Michell Gallery | Adelaide / Kurna |
| Jonathan Smart Gallery Emily Gardener Projects | Christchurch / Ōtautahi |
| Justin Miller Art | Sydney / Gadigal Country |
| La Loma | Los Angeles |
| Lennox St. Gallery | Melbourne / Naarm |
| .M Contemporary | Sydney / Gadigal Country |
| MARS Gallery | Melbourne / Naarm |
| Martin Browne Contemporary | Sydney / Gadigal Country |
| Michael Lett | Auckland / Tāmaki Makaurau |
| Michael Reid Sydney + Berlin | Sydney / Gadigal Country, Berlin |
| Mitchell Fine Art | Brisbane / Meanjin |

| | |
|------------------------|--|
| N.Smith Gallery | Sydney / Gadigal Country |
| Nanda\Hobbs | Sydney / Gadigal Country |
| National Art School | Sydney / Gadigal Country |
| Neon Parc | Melbourne / Naarm |
| Niagara Galleries | Melbourne / Naarm |
| OLSEN | Sydney / Gadigal Country |
| PAULNACHE | Gisborne / Tūranganui-a-Kiwa |
| PIERMARQ* | Sydney / Gadigal Country |
| Pontone Gallery | London |
| REDBASE ART | Sydney / Gadigal Country, Yogyakarta |
| Roslyn Oxley9 Gallery | Sydney / Gadigal Country |
| SABBIA | Sydney / Gadigal Country |
| Saint Cloche | Sydney / Gadigal Country |
| SANDERSON | Auckland / Tāmaki Makaurau |
| Stanley Street Gallery | Sydney / Gadigal Country |
| STATION | Melbourne / Naarm, Sydney / Gadigal Country |
| Studio A | Sydney / Gadigal Country |
| Sullivan+Strumpf | Sydney / Gadigal Country, Melbourne / Naarm, Singapore |
| The Commercial | Sydney / Gadigal Country |
| The Renshaws' | Brisbane / Meanjin |
| Two Rooms | Auckland / Tāmaki Makaurau |
| Utopia Art Sydney | Sydney / Gadigal Country |
| Vermilion Art | Sydney / Gadigal Country |
| Void_Melbourne | Melbourne / Naarm |

PHOTO SYDNEY

An inaugural sector dedicated to spotlighting the breadth and vitality of contemporary photography.

| | |
|------------------------------------|---|
| Alexia Sinclair | Bowral / Dharawal |
| Australian Galleries Greg Weight | Sydney / Gadigal Country, Melbourne / Naarm |
| Blender Gallery | Sydney / Gadigal Country |
| Caterina Pacialeo Tina FiveAsh | Sydney / Gadigal Country |
| Christopher Ireland | Sydney / Gadigal Country |
| Head On Photo Festival | Sydney / Gadigal Country |
| John Marmaras John Gollings | Sydney / Gadigal Country |
| OCULI Collective | Sydney / Gadigal Country |
| OLSEN | Sydney / Gadigal Country |
| Paul Blackmore | Byron Bay / Cavanbah |
| photo access | Canberra / Ngambri and Ngunnawal Country |
| sandyprints | Sydney / Gadigal Country |
| Simon Harsent | Sydney / Gadigal Country |
| Toby Burrows | Sydney / Gadigal Country |

FUTURE

A dynamic platform for young galleries or Artist Run Initiatives which have been operating for five years or less, presenting curated solo or duo artist exhibitions of new work.

| | |
|------------------------|-------------------|
| Animal House Fine Arts | Melbourne / Naarm |
|------------------------|-------------------|

C. Gallery
Five Walls Gallery
Jennings Kerr
Minerva,
Nasha Gallery
VELVET LOBSTER

Melbourne / Naarm
Melbourne / Naarm
Robertson / Gundungurra
Sydney / Gadigal Country
Sydney / Gadigal Country
Sydney / Gadigal Country

WORKS ON PAPER

Presented in association with The Print Council of Australia Inc, Works on Paper showcases the best of contemporary printmaking and works on paper.

16albermarle Project Space & Project Eleven
3 Studios
Aboriginal & Pacific Art
ACAE Gallery
AGAVE PRINT STUDIO
Ames Yavuz
Australian Print Workshop
Baldessin Press
CBD Gallery
CHALK HORSE
Cicada Press
Gary Shinfield Studio and Collection
Jan Davis
Jenny Robinson Print Studio
Kaleidoscope Editions
Krack Studio
Megalo Print Studio
Melbourne Studios
Michelle Perry Fine Arts
N.Smith Gallery
Nanda\Hobbs
Open Bite Printmakers Inc.
PARC Editions
PARKER Contemporary
Print Council of Australia
Riverside Studios
Studio Bronwyn Berman
Sydney Printmakers
Tiliqua Tiliqua
UPSPACE
WHALING ROAD STUDIO

Sydney / Gadigal Country
Sydney / Gadigal Country
Sydney / Gadigal Country
Melbourne / Naarm
Trentham / Dja Dja Warrung
Sydney / Gadigal Country, Singapore, London
Melbourne / Naarm
St Andrews / Wurundjeri Country
Sydney / Gadigal Country
Sydney / Gadigal Country
Sydney / Gadigal Country
Woy Woy
Tullera
Sydney / Gadigal Country
Melbourne / Naarm
Yogyakarta
Canberra / Ngambri and Ngunnawal Country
Melbourne / Naarm
Sydney / Gadigal Country
Sydney / Gadigal Country
Sydney / Gadigal Country
Sydney / Gadigal Country
Seoul
Brisbane / Meanjin
Melbourne / Naarm
Melbourne / Naarm
Robertson / Gundungurra
Sydney / Gadigal Country
Sydney / Gadigal Country
Sydney / Gadigal Country
Sydney / Gadigal Country